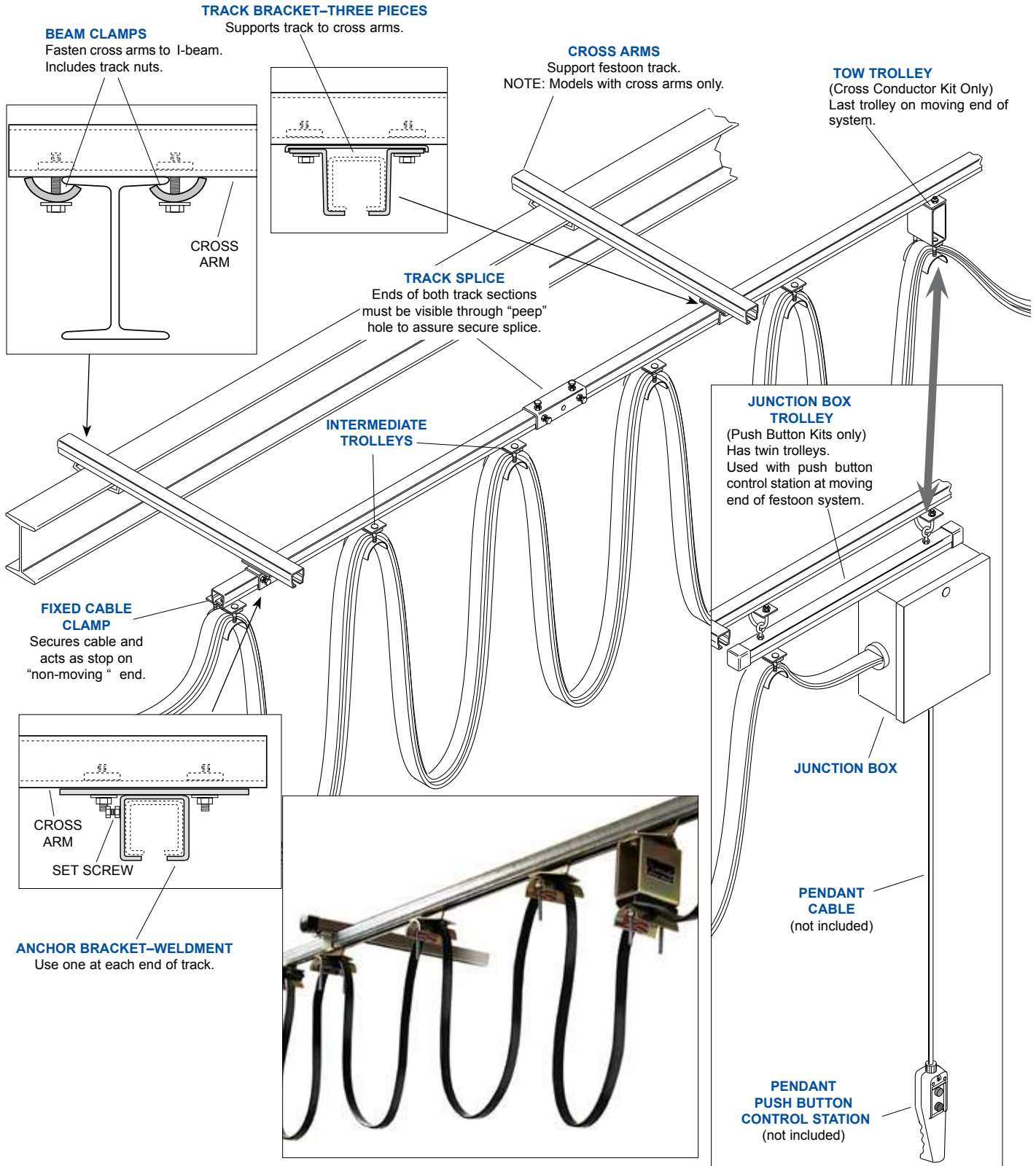


SPECIALLY DESIGNED FOR OVERHEAD CRANES

STEEL TRACK FESTOON SYSTEM KITS

Install a high speed, smooth operating festoon system on an overhead crane or similar application. Kits include all required parts; track and trolleys, mounting clamps, cross support arms, even electrical cable which has been pre-installed on the trolleys. To install, clamp cross arms to beam or other support, affix track to support beams, roll trolleys into track and make electrical connections on each end. It's that simple. It's that fool-proof. Kits also available without cross arms and with spark resistant trolleys. Refer to model charts on following pages for system lengths and cables available.



**14 Gauge Track Festooned Push Button (less pendant)
16 Conductor Flat Cables (#16-8C & #16-8C)**

CRANE SPAN	10'	20'	30'	40'	50'	60'	70'	80'	90'	100'
W/cross arms	HNA13141	HNA14241	HNA14341	HNA14441	HNA14541	HNA14641	HNA14741	HNA14841	HNA14941	HNA15041
W/O cross arms*	HNA13142	HNA14242	HNA14342	HNA14442	HNA14542	HNA14642	HNA14742	HNA14842	HNA14942	HNA15042

SYSTEM INCLUDES:

Roller Track (10 foot sections)	1	2	3	4	5	6	7	8	9	10
Track Splice	0	1	2	3	4	5	6	7	8	9
Track Bracket*	0	2	4	6	8	10	12	14	16	18
Anchor Bracket*	2	2	2	2	2	2	2	2	2	2
Cross Arms (30")*	2	4	6	8	10	12	14	16	18	20
Locking Beam Clamp	4	8	12	16	20	24	28	32	36	40
End Stop	1	1	1	1	1	1	1	1	1	1
Fixed Cable Clamp	1	1	1	1	1	1	1	1	1	1
Control Trolley	1	1	1	1	1	1	1	1	1	1
Intermediate Trolley	2	3	5	6	8	10	12	14	16	18
Control Cable #16-8c (length = system + hook-up)	2	2	2	2	2	2	2	2	2	2
Flat Cable Connector	2	2	2	2	2	2	2	2	2	2
Junction Box Assembly	1	1	1	1	1	1	1	1	1	1

**14 Gauge Track Cross Conductors
12 Conductor Flat Cables (#14-4C & #16-8C)**

CRANE SPAN	10'	20'	30'	40'	50'	60'	70'	80'	90'	100'
W/cross arms	HNA15141	HNA15241	HNA15341	HNA15441	HNA15541	HNA15641	HNA15741	HNA15841	HNA15941	HNA13441
W/O cross arms*	HNA15142	HNA15242	HNA15342	HNA15442	HNA15542	HNA15642	HNA15742	HNA15842	HNA15942	HNA13442

SYSTEM INCLUDES:

Roller Track (10 foot sections)	1	2	3	4	5	6	7	8	9	10
Track Splice	0	1	2	3	4	5	6	7	8	9
Track Bracket*	0	2	4	6	8	10	12	14	16	18
Anchor Bracket*	2	2	2	2	2	2	2	2	2	2
Cross Arms (30")*	2	4	6	8	10	12	14	16	18	20
Locking Beam Clamp	4	8	12	16	20	24	28	32	36	40
End Stop	1	1	1	1	1	1	1	1	1	1
Fixed Cable Clamp	1	1	1	1	1	1	1	1	1	1
Tow Trolley	1	1	1	1	1	1	1	1	1	1
Intermediate Trolley	2	3	5	6	8	10	12	14	16	18
Power Cable #14-4C (length = system + hook-up)	1	1	1	1	1	1	1	1	1	1
Control Cable #16-8c (length = system + hook-up)	1	1	1	1	1	1	1	1	1	1
Flat Cable Connector	2	2	2	2	2	2	2	2	2	2

**14 Gauge Track Cross Conductors
12 Conductor Flat Cables (#12-4C & #16-8C)**

CRANE SPAN	10'	20'	30'	40'	50'	60'	70'	80'	90'	100'
W/cross arms	HNA18141	HNA18241	HNA18341	HNA18441	HNA18541	HNA18641	HNA18741	HNA18841	HNA18941	HNA19041
W/O cross arms*	HNA18142	HNA18242	HNA18342	HNA18442	HNA18542	HNA18642	HNA18742	HNA18842	HNA18942	HNA19042

SYSTEM INCLUDES:

Roller Track (10 foot sections)	1	2	3	4	5	6	7	8	9	10
Track Splice	0	1	2	3	4	5	6	7	8	9
Track Bracket*	0	2	4	6	8	10	12	14	16	18
Anchor Bracket*	2	2	2	2	2	2	2	2	2	2
Cross Arms (30")*	2	4	6	8	10	12	14	16	18	20
Locking Beam Clamp	4	8	12	16	20	24	28	32	36	40
End Stop	1	1	1	1	1	1	1	1	1	1
Fixed Cable Clamp	1	1	1	1	1	1	1	1	1	1
Tow Trolley	1	1	1	1	1	1	1	1	1	1
Intermediate Trolley	2	3	5	6	8	10	12	14	16	18
Power Cable #12-4C (length = system + hook-up)	1	1	1	1	1	1	1	1	1	1
Control Cable #16-8c (length = system + hook-up)	1	1	1	1	1	1	1	1	1	1
Flat Cable Connector	4	4	4	4	4	4	4	4	4	4

* Cross arms, track brackets and anchor brackets not included.

14 Gauge Track Cross Conductors

12 Conductor Flat Cables (#10-4C & #16-8C)

CRANE SPAN	10'	20'	30'	40'	50'	60'	70'	80'	90'	100'
W/cross arms	HNA19141	HNA19241	HNA19341	HNA19441	HNA19541	HNA19641	HNA19741	HNA19841	HNA19941	HNA20041
W/O cross arms*	HNA19142	HNA19242	HNA19342	HNA19442	HNA19542	HNA19642	HNA19742	HNA19842	HNA19942	HNA20042

SYSTEM INCLUDES:

Roller Track (10 foot sections)	1	2	3	4	5	6	7	8	9	10
Track Splice	0	1	2	3	4	5	6	7	8	9
Track Bracket*	0	2	4	6	8	10	12	14	16	18
Anchor Bracket*	2	2	2	2	2	2	2	2	2	2
Cross Arms (30")*	2	4	6	8	10	12	14	16	18	20
Locking Beam Clamp	4	8	12	16	20	24	28	32	36	40
End Stop	1	1	1	1	1	1	1	1	1	1
Fixed Cable Clamp	1	1	1	1	1	1	1	1	1	1
Tow Trolley	1	1	1	1	1	1	1	1	1	1
Intermediate Trolley	2	3	5	6	8	10	12	14	16	18
Power Cable #10-4C (length = system + hook-up)	1	1	1	1	1	1	1	1	1	1
Control Cable #16-8c (length = system + hook-up)	1	1	1	1	1	1	1	1	1	1
Flat Cable Connector	4	4	4	4	4	4	4	4	4	4

14 Gauge Track Cross Conductors

12 Conductor Flat Cables (#8-4C & #16-8C)

CRANE SPAN	10'	20'	30'	40'	50'	60'	70'	80'	90'	100'
W/cross arms	HNA20141	HNA20241	HNA20341	HNA20441	HNA20541	HNA20641	HNA20741	HNA20841	HNA20941	HNA21041
W/O cross arms*	HNA20142	HNA20242	HNA20342	HNA20442	HNA20542	HNA20642	HNA20742	HNA20842	HNA20942	HNA21042

SYSTEM INCLUDES:

Roller Track (10 foot sections)	1	2	3	4	5	6	7	8	9	10
Track Splice	0	1	2	3	4	5	6	7	8	9
Track Bracket*	0	2	4	6	8	10	12	14	16	18
Anchor Bracket*	2	2	2	2	2	2	2	2	2	2
Cross Arms (30")*	2	4	6	8	10	12	14	16	18	20
Locking Beam Clamp	4	8	12	16	20	24	28	32	36	40
End Stop	1	1	1	1	1	1	1	1	1	1
Fixed Cable Clamp	1	1	1	1	1	1	1	1	1	1
Tow Trolley	1	1	1	1	1	1	1	1	1	1
Intermediate Trolley	2	3	5	6	8	10	12	14	16	18
Power Cable #8-4C (length = system + hook-up)	1	1	1	1	1	1	1	1	1	1
Control Cable #16-8c (length = system + hook-up)	1	1	1	1	1	1	1	1	1	1
Flat Cable Connector	4	4	4	4	4	4	4	4	4	4

14 Gauge Track Cross Conductors

4 Conductor Flat Cables (#14-4C)

CRANE SPAN	10'	20'	30'	40'	50'	60'	70'	80'	90'	100'
W/cross arms	HNA15143	HNA15243	HNA15343	HNA15443	HNA15543	HNA15643	HNA15743	HNA15843	HNA15943	HNA13443
W/O cross arms*	HNA15144	HNA15244	HNA15344	HNA15444	HNA15544	HNA15644	HNA15744	HNA15844	HNA15944	HNA13444

SYSTEM INCLUDES:

Roller Track (10 foot sections)	1	2	3	4	5	6	7	8	9	10
Track Splice	0	1	2	3	4	5	6	7	8	9
Track Bracket*	0	2	4	6	8	10	12	14	16	18
Anchor Bracket*	2	2	2	2	2	2	2	2	2	2
Cross Arms (30")*	2	4	6	8	10	12	14	16	18	20
Locking Beam Clamp	4	8	12	16	20	24	28	32	36	40
End Stop	1	1	1	1	1	1	1	1	1	1
Fixed Cable Clamp	1	1	1	1	1	1	1	1	1	1
Tow Trolley	1	1	1	1	1	1	1	1	1	1
Intermediate Trolley	2	3	5	6	8	10	12	14	16	18
Power Cable #14-4C (length = system + hook-up)	1	1	1	1	1	1	1	1	1	1
Flat Cable Connector	2	2	2	2	2	2	2	2	2	2

* Cross arms, track brackets and anchor brackets not included.

14 Gauge Track Cross Conductors

4 Conductor Flat Cables (#12-4C)

CRANE SPAN	10'	20'	30'	40'	50'	60'	70'	80'	90'	100'
W/cross arms	HNA18143	HNA18243	HNA18343	HNA18443	HNA18543	HNA18643	HNA18743	HNA18843	HNA18943	HNA19043
W/O cross arms*	HNA18144	HNA18244	HNA18344	HNA18444	HNA18544	HNA18644	HNA18744	HNA18844	HNA18944	HNA19044

SYSTEM INCLUDES:

Roller Track (10 foot sections)	1	2	3	4	5	6	7	8	9	10
Track Splice	0	1	2	3	4	5	6	7	8	9
Track Bracket*	0	2	4	6	8	10	12	14	16	18
Anchor Bracket*	2	2	2	2	2	2	2	2	2	2
Cross Arms (30")*	2	4	6	8	10	12	14	16	18	20
Locking Beam Clamp	4	8	12	16	20	24	28	32	36	40
End Stop	1	1	1	1	1	1	1	1	1	1
Fixed Cable Clamp	1	1	1	1	1	1	1	1	1	1
Tow Trolley	1	1	1	1	1	1	1	1	1	1
Intermediate Trolley	2	3	5	6	8	10	12	14	16	18
Power Cable #12-4C (length = system + hook-up)	1	1	1	1	1	1	1	1	1	1
Flat Cable Connector	2	2	2	2	2	2	2	2	2	2

14 Gauge Track Cross Conductors

4 Conductor Flat Cables (#10-4C)

CRANE SPAN	10'	20'	30'	40'	50'	60'	70'	80'	90'	100'
W/cross arms	HNA19143	HNA19243	HNA19343	HNA19443	HNA19543	HNA19643	HNA19743	HNA19843	HNA19943	HNA20043
W/O cross arms*	HNA19144	HNA19244	HNA19344	HNA19444	HNA19544	HNA19644	HNA19744	HNA19844	HNA19944	HNA20044

SYSTEM INCLUDES:

Roller Track (10 foot sections)	1	2	3	4	5	6	7	8	9	10
Track Splice	0	1	2	3	4	5	6	7	8	9
Track Bracket*	0	2	4	6	8	10	12	14	16	18
Anchor Bracket*	2	2	2	2	2	2	2	2	2	2
Cross Arms (30")*	2	4	6	8	10	12	14	16	18	20
Locking Beam Clamp	4	8	12	16	20	24	28	32	36	40
End Stop	1	1	1	1	1	1	1	1	1	1
Fixed Cable Clamp	1	1	1	1	1	1	1	1	1	1
Tow Trolley	1	1	1	1	1	1	1	1	1	1
Intermediate Trolley	2	3	5	6	8	10	12	14	16	18
Power Cable #10-4C (length = system + hook-up)	1	1	1	1	1	1	1	1	1	1
Flat Cable Connector	2	2	2	2	2	2	2	2	2	2

14 Gauge Track Cross Conductors

4 Conductor Flat Cables (#8-4C)

CRANE SPAN	10'	20'	30'	40'	50'	60'	70'	80'	90'	100'
W/cross arms	HNA20143	HNA20243	HNA20343	HNA20443	HNA20543	HNA20643	HNA20743	HNA20843	HNA20943	HNA21043
W/O cross arms*	HNA20144	HNA20244	HNA20344	HNA20444	HNA20544	HNA20644	HNA20744	HNA20844	HNA20944	HNA21044

SYSTEM INCLUDES:

Roller Track (10 foot sections)	1	2	3	4	5	6	7	8	9	10
Track Splice	0	1	2	3	4	5	6	7	8	9
Track Bracket*	0	2	4	6	8	10	12	14	16	18
Anchor Bracket*	2	2	2	2	2	2	2	2	2	2
Cross Arms (30")*	2	4	6	8	10	12	14	16	18	20
Locking Beam Clamp	4	8	12	16	20	24	28	32	36	40
End Stop	1	1	1	1	1	1	1	1	1	1
Fixed Cable Clamp	1	1	1	1	1	1	1	1	1	1
Tow Trolley	1	1	1	1	1	1	1	1	1	1
Intermediate Trolley	2	3	5	6	8	10	12	14	16	18
Power Cable #8-4C (length = system + hook-up)	1	1	1	1	1	1	1	1	1	1
Flat Cable Connector	2	2	2	2	2	2	2	2	2	2

* Cross arms, track brackets and anchor brackets not included.