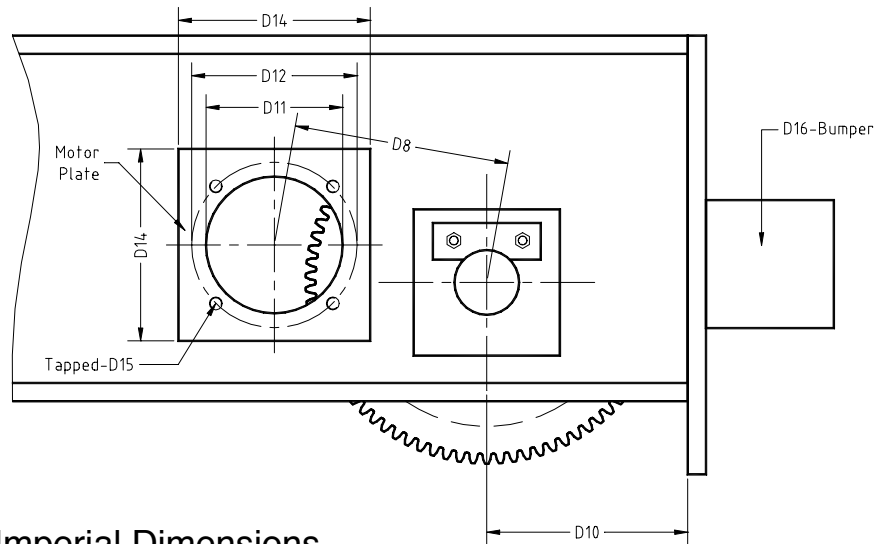
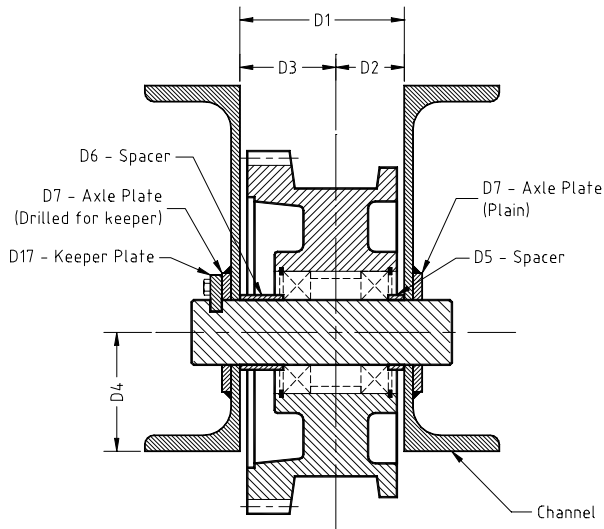


Double Flange Wheels



Double Flange Wheel Assembly - Imperial Dimensions

PART NO.	TREAD DIAM.	D1	D2	D3	D4	PART NO. D5	PART NO. D6	PART NO. D7	18T PINION D8	25T PINION D8	D10	PART NO. D16	PART NO. D17
DF120	4.72	4.00	2.31	1.69	1.63	SP1-120	SP2-120	AP02	4.134	4.547	6.00	BP01	KP01
DF200	7.87	4.50	1.86	2.65	3.25	SP1-200	SP2-200	AP03	5.906	6.319	6.50	BP01	KP01
DF320	12.60	6.00	3.68	2.33	5.25	SP1-320	SP2-320	AP04	-	9.094	9.50	BP01	KP01
DF500	19.69	8.00	4.79	3.21	7.50	SP1-500	SP2-500	AP05	-	9.626	15.00	BP01	KP01

Double Flange Wheel Assembly - Metric Dimensions

PART NO.	TREAD DIAM.	D1	D2	D3	D4	PART NO. D5	PART NO. D6	PART NO. D7	18T PINION D8	25T PINION D8	D10	PART NO. D16	PART NO. D17
DF120	120	102	59	43	41	SP1-120	SP2-120	AP02	105	115	152	BP01	KP01
DF200	200	114	47	67	83	SP1-200	SP2-200	AP03	150	161	165	BP01	KP01
DF320	320	152	93	59	133	SP1-320	SP2-320	AP04	-	231	241	BP01	KP01
DF500	500	203	122	82	191	SP1-500	SP2-500	AP05	-	245	381	BP01	KP01

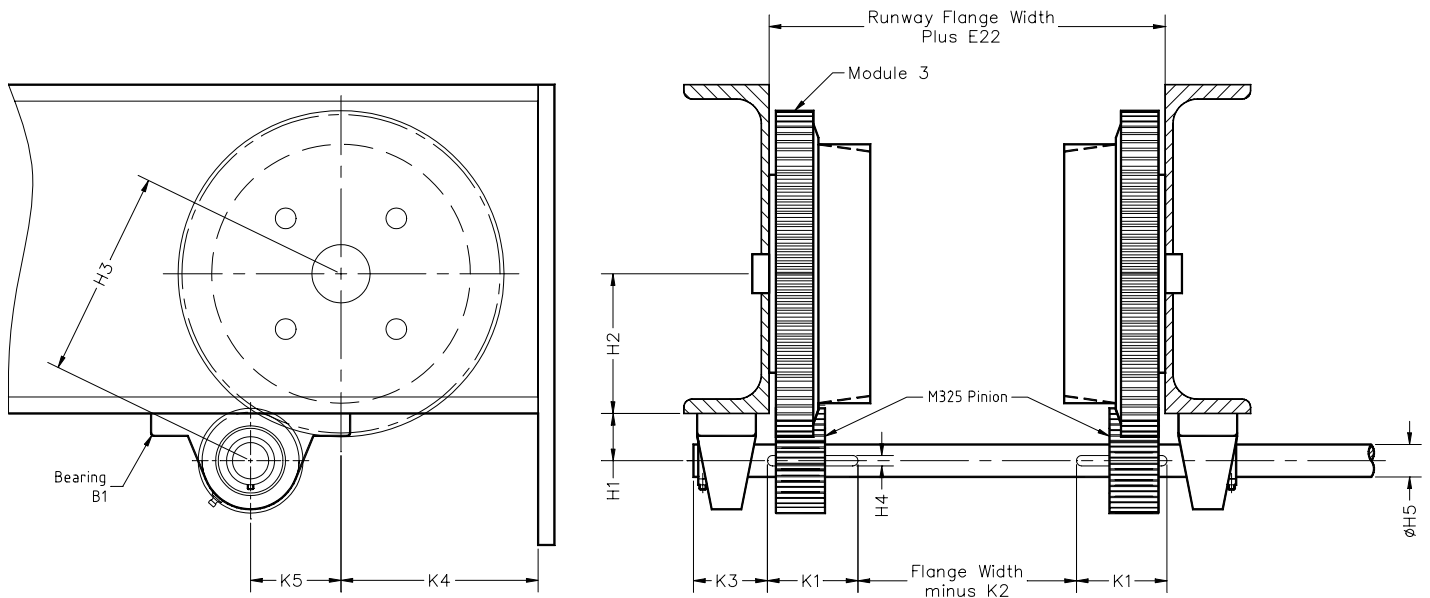
Motor Plate - Imperial Dimensions

PART NO.	D11	D12	D14	D15
MP140	3.74	4.53	5.50	5/16-18UNC
MP160	4.33	5.12	6.50	3/8-16UNC
MP200	5.12	6.50	8.00	3/8-16UNC

Motor Plate - Metric Dimensions

PART NO.	D11	D12	D14	D15
MP140	95	115	140	5/16-18UNC
MP160	110	130	165	3/8-16UNC
MP200	130	165	203	3/8-16UNC

Single Flange Wheels



Single Flange Wheel Assembly - Imperial Dimensions

WHEEL TYPE	TREAD DIA.	E22	H1	H2	WITH M325 PINION H3	H4	H5	K1	K2	K3	K4	K5	PART NO. B1
SF130	5.12	3.25	1.44	3.00	4.55	0.25	1.00	2.75	2.15	2.75	6.0	0.99	UCP205-1
SF200	7.87	3.25	1.44	4.25	6.32	0.25	1.00	2.75	2.15	2.75	6.0	2.75	UCP205-1
SF315	12.40	3.25	1.44	7.50	9.09	0.25	1.00	2.75	2.15	2.75	9.0	1.68	UCP205-1

Single Flange Wheel Assembly - Metric Dimensions

WHEEL TYPE	TREAD DIA.	E22	H1	H2	WITH M325 PINION H3	H4	H5	K1	K2	K3	K4	K5	PART NO. B1
SF130	130	83	36.5	76.2	115.5	8	25	70	55	70	152	25.2	UCP205-25
SF200	200	83	36.5	108.0	160.5	8	25	70	55	70	152	69.9	UCP205-25
SF315	315	83	36.5	190.5	231.0	8	25	70	55	70	229	42.7	UCP205-25